

EXTENDED PALM 2 HOLE FIXING LUGS -TYPE POI



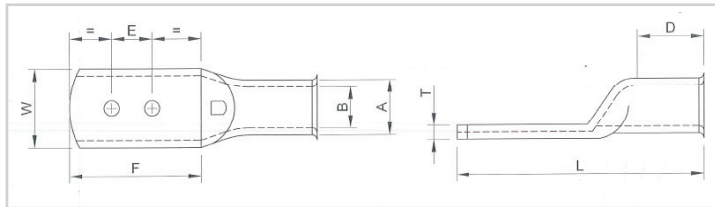
LML Products Ltd

T: 01249 810000

E: sales@lmlproducts.co.uk

W: www.lmlproducts.co.uk

The numerical part of the series reference denotes the conductor cross sectional area in mm². The following information is intended to provide comprehensive ordering assistance and dimensional data on our wide range.



Stocked Items Available
on Next Day Service

Volume Discounts Available,
Please Call for Prices

Enhanced or Modified Specifications
Available - Please Send Us Details

Nominal Dimensions MM

CAT REF	STUD; SIZE (MM)	A	B	W	E	F	D	L	T	£ Price/100
CAT10POI	6.5	6.9	4.4	11.0	16.0	34.0	12.0	52.0	2.4	70.4
CAT16POI	6.5	8.0	5.6	11.0	16.0	34.0	12.0	52.0	2.4	58.25
CAT25POI	6.5	9.5	7.0	13.5	16.0	34.0	13.0	55.0	2.4	65.34
CAT35POI	6.5	11.0	8.2	15.5	16.0	34.0	14.0	56.0	2.8	74.96
CAT50POI	6.5	12.1	9.5	17.2	16.0	34.0	18.0	61.0	2.6	80.03
CAT70POI	12.5	15.0	11.5	21.2	45.0	75.0	18.0	106.0	3.5	202.6
CAT95POI	12.5	17.0	13.5	24.5	45.0	75.0	24.0	112.0	3.5	224.89
CAT120POI	12.5	19.0	15.0	27.5	45.0	75.0	27.0	117.0	4.0	263.38
CAT150POI	12.5	21.0	16.5	30.3	45.0	75.0	27.0	119.0	4.5	299.85
CAT185POI	12.5	23.0	18.5	33.5	45.0	75.0	34.0	125.0	4.5	330.24
CAT240POI	12.5	26.0	21.0	37.7	45.0	75.0	32.0	125.0	5.0	395.07
CAT300POI	12.5	28.0	23.0	40.8	45.0	75.0	37.0	136.0	5.0	440.66
CAT400POI	12.5	32.0	27.0	47.3	45.0	75.0	37.0	138.0	5.0	516.63
CAT500POI	12.5	38.0	30.0	55.0	45.0	75.0	60.0	167.0	8.2	1023.13
CAT630POI	12.5	44.0	33.8	63.0	45.0	75.0	60.0	167.0	10.2	1458.72
CAT800POI	12.5	49.0	38.0	70.0	45.0	75.0	56.0	173.0	11.0	1904.44

NOTE: The stud size and centres shown are standard. Other sizes and centres can be provided if required.

