

STANDARD DUTY TERMINAL LUGS -TYPE NT



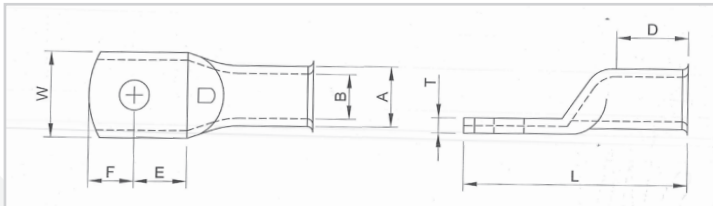
LML Products Ltd

T: 01249 810000

E: sales@lmlproducts.co.uk

W: www.lmlproducts.co.uk

The numerical part of the series reference denotes the conductor cross sectional area in mm². Thus to order, for example, a terminal for a 25mm² conductor and an M8 stud size the full ordering reference is CAT25-8NT. The following information is intended to provide comprehensive ordering assistance and dimensional data on our wide range.



Stocked Items Available
on Next Day Service

Volume Discounts Available,
Please Call for Prices

Enhanced or Modified Specifications
Available - Please Send Us Details

CAT REF	STUD; SIZE (MM)	A	B	W	E	F	D	L	T
CAT10	6NT	6.2	4.5	10.4	6.2	6.2	9.3	24	1.3
	8NT	6.6	4.7	13.5	8.0	7.0	9.5	29.5	1.2
CAT16	5NT	7.5	5.5	10.8	8.8	6.2	9.5	30.0	2.0
	6NT	7.5	5.5	10.8	8.8	6.2	9.5	30.0	2.0
	8NT	7.5	5.5	13.5	8.0	7.0	9.5	30.0	1.6
CAT25	10NT	7.5	5.5	15.0	10.9	9.6	9.5	35.5	1.5
	5NT, 6NT	9.4	7.0	13.8	8.8	6.2	12.0	32.5	2.4
	8NT	9.4	7.0	13.8	8.0	7.0	12.0	32.5	2.4
	10NT	9.4	7.0	16.0	10.9	9.6	12.0	38.0	2.1
CAT35	12NT	9.4	7.0	18.0	10.5	10.0	12.0	38.0	1.9
	5NT, 6NT	10.6	8.2	15.3	8.8	6.2	14.0	35.0	2.4
	8NT	10.6	8.2	15.3	8.0	7.0	14.0	35.0	2.4
	10NT	10.6	8.2	15.3	10.9	9.6	14.0	40.5	2.4
CAT50	12NT	10.6	8.2	18.0	10.5	10.0	14.0	40.5	2.2
	6NT	11.9	9.5	17.4	8.8	6.2	14.9	37.0	2.5
	8NT	11.9	9.5	17.4	8.0	7.0	14.9	37.0	2.5
	10NT	11.9	9.5	17.4	10.9	9.6	14.9	42.5	2.5
CAT70	12NT	11.9	9.5	17.4	10.5	10.0	14.9	42.5	2.5
	6NT	14.5	11.5	20.9	8.8	6.2	16.0	40.5	3.0
	8NT	14.5	11.5	20.9	8.0	7.0	16.0	40.5	3.0
	10NT	14.5	11.5	20.9	10.9	9.6	16.0	46.0	3.0
CAT95	12NT	14.5	11.5	20.9	10.5	10.0	16.0	46.0	3.0
	14NT, 16NT	14.5	11.5	20.9	16.0	13.0	17.0	55.0	3.0
	8NT	16.7	13.5	24.3	10.9	9.6	18.0	49.5	3.2
	10NT	16.7	13.5	24.3	10.9	9.6	19.0	49.5	3.2
CAT120	12NT	16.7	13.5	24.3	10.5	10.0	19.0	49.5	3.2
	B, 8NT, 10NT, 12NT	19.0	15.0	27.3	14.0	10.0	19.0	55.5	4.0
CAT150	14NT	19.0	15.0	27.3	13.2	10.8	19.0	55.5	4.0
	8NT, 10NT, 12NT, B	21.0	16.5	30.2	14.0	10.0	23.0	61.0	4.5
CAT185	14NT	21.0	16.5	30.2	13.2	10.8	23.0	61.0	4.5
	B, 8NT, 10NT, 12NT	23.0	18.5	33.3	14.0	10.0	26.0	66.5	4.5
	14NT	23.0	18.5	33.3	13.2	10.8	26.0	66.5	4.5

Nominal Dimensions MM